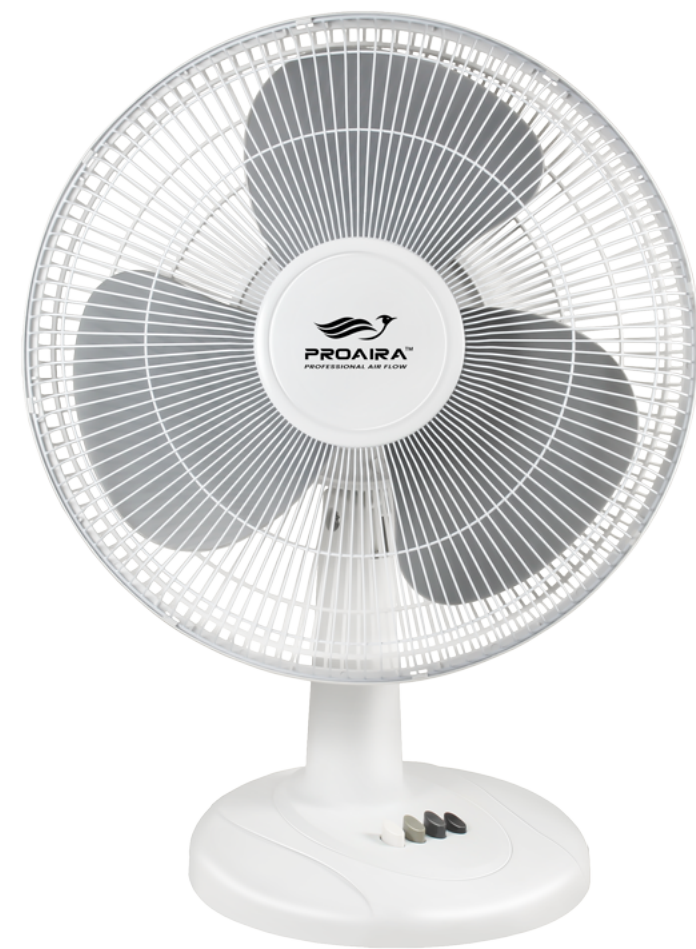




Item: DF16W  
Model: TP7-16A



## 16" Desktop Fan

### Features:

- Wide Area Oscillation
- Push Button ON/OFF Switch with 3 Speed Settings
- High Performance 16" Blade
- Adjustable Vertical Tilt
- Steel Safety Grill
- Long 5ft" Cordset
- 120V A.C. / 60Hz.



### INTENDED USE:

This product is intended for indoor residential and office use only, not for industrial or other commercial applications. Use only with electrical wiring that is in good working order and that meets applicable codes and ordinances. If you have any questions whether your wiring is adequate, consult a qualified electrician.

While using your fan, you should follow the IMPORTANT INSTRUCTIONS listed below. As part of those instructions, we have used the word **WARNING** to indicate the level of hazard. **WARNING** indicates a hazard which, if not avoided, could result in injury or death.

### IMPORTANT INSTRUCTIONS

As with all electrical appliances, basic safety precautions should always be followed to reduce the risk of electric shock, fire, or injury to persons, including the following precautions:

- Read all the instructions before using this fan.
- Use this fan only as described in this manual. Any other use not recommended by the manufacturer may cause electrical shock, fire, or injury to persons.
- Do not operate the fan with a damaged power cord or after the fan malfunctions or has been dropped in any manner.
- Use of extreme caution is necessary when any fan is used by or near children, disabled persons or pets and whenever the fan is left operating unattended.
- Do not place the fan on a small, unlevel, uneven or any surface which might allow fan to tip or fall.
- For proper operation, fan should be placed on a smooth, non-combustible surface.
- Always unplug fan when not in use.
- Do not operate the fan with blade guards or any safety device removed.
- Avoid the use of extension cords due to risk of fire. If an extension cord must be used, the cord must be minimum 14 AWG and rated not less than 1875 watts.
- Do not run power cord under carpeting. Do not cover cord with throw rugs, runners or the like. Arrange cord away from traffic area where it will not be tripped over.
- Do not insert or allow any object to enter any openings on the fan. Doing so may cause electric shock and/or fire hazard.

### Please Save These Instructions

#### WARNING: SHOCK HAZARD

Use your fan only in dry environments. This fan is not intended for use in a bathroom, laundry area, or similar locations, near sinks, washing machines, swimming pools or other sources of water. Never locate fan where it may fall into a bathtub or other water receptacle. Do not use in damp environments such as flooded basements.

#### WARNING: HOT SURFACES

Do not touch fan motor when in use. This motor is hot when in use, to avoid burns, do not let bare skin touch hot surfaces.

#### WARNING: FIRE HAZARD

Fans have arcing or sparking parts inside. Do not use near combustible materials or flammable gases or sources of heat. DO NOT USE in areas where gasoline, paint or flammable materials are used or stored. To prevent a possible fire, do not block air intakes or exhaust in any manner. Do not insert or allow foreign objects to enter any ventilation or exhaust opening as this may cause an electric shock, fire, or damage the fan.

#### WARNING: ELECTRICAL SHOCK HAZARD

Do not use with damaged cord or plug. Use with adequate electrical system that is up to code.

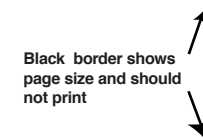
**CAUTION-TO PREVENT ELECTRIC SHOCK,** this appliance has a two prong plug that must be inserted into a matching properly grounded outlet to reduce the risk of electrical shock. This fan has a polarized plug (one blade is wider than the other). To reduce the risk of electric shock, this plug is designed to fit a polarized outlet only one way. If the plug does not fit fully into the outlet, reverse the plug. If the plug still does not fit, contact a qualified electrician. Do not attempt to defeat this safety feature.

This product employs overload protection (fuse). A blown fuse indicates an overload or short-circuit situation. If the fuse blows, unplug the product from the outlet. Replace the fuse as per the user servicing instructions (follow product marking for proper fuse rating) and check the product. If the replacement fuse blows, a short-circuit may be present and the product should be discarded or returned to an authorized service facility for examination and/or repair.

DO NOT operate any fan with a damaged cord or plug or after fan malfunctions, has been dropped or damaged in any manner. Do not operate fan with a broken blade, safety cage or any visual imperfections.

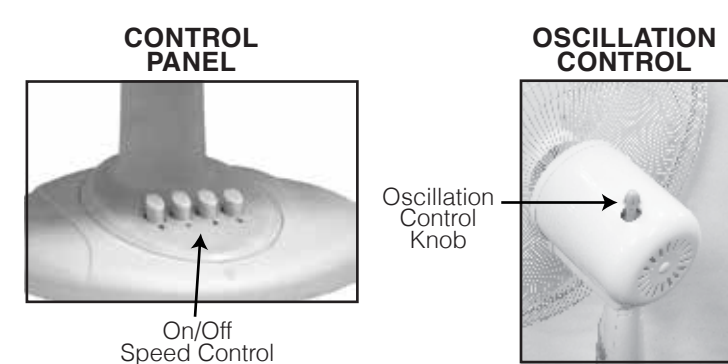
DO NOT run power cord under carpeting. DO NOT cover cord with throw rugs, runners or the like. Arrange cord away from traffic area where it will not be tripped over. Avoid the use of extension cords due to risk of fire. If an extension cord must be used, the cord must be minimum 14 AWG and rated not less than 1875 watts. Do not use an extension cord unless the plug can be completely inserted into its receptacle. Unplug the fan when not in use. Do not operate fan with its ventilation obstructed.

Page 2



### USAGE:

**FAN OPERATION:** Always operate the fan in the upright position following all instructions and recommendations listed in this manual. **FAN LOCATION:** Place the fan in the area of the room that will provide proper fan cooling. **FAN CONNECTION:** Plug fan directly into 120 volt A.C., 60 Hz wall outlet. Be sure plug fits tightly in outlet. A loose connection may cause overheating and damage to the plug or fan. **NOTE:** To prevent overloading a circuit, do not plug the fan into a circuit that is servicing other electrical needs.

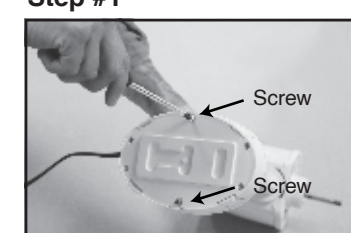


**TURNING FAN ON/OFF:** Place fan on stable level surface. Plug fan into properly grounded outlet. To start the fan, press desired speed button: 1-LOW, 2-MED, 3-HIGH. Press 0-OFF to discontinue use. Unplug fan when not in use.

**OSCILLATION:** To start fan oscillation, press Oscillation Control Knob (located above motor housing) down. To stop oscillation function pull Oscillation Control Knob up while the fan is in any oscillation position.

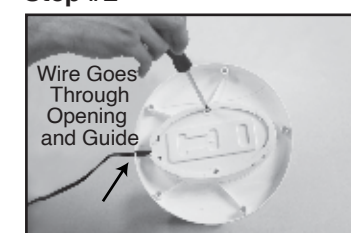
**FAN ASSEMBLY:** Assembly is required to use this fan.

#### Step #1



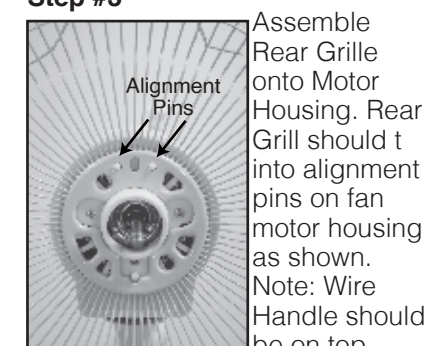
Remove two (2) screws from base of fan and save them for Step #2

#### Step #2



Place Power Cord wire through opening of plastic Fan Base. With cord opening properly positioned, snap plastic Fan Base onto fan body. Re-assemble screws removed in Step #1.

#### Step #3



Assemble Rear Grille onto Motor Housing. Rear Grill should fit into alignment pins on fan motor housing as shown. Note: Wire Handle should be on top.

#### Step #4



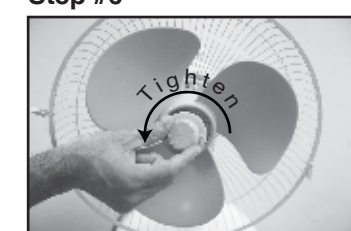
Thread Locknut onto Motor Housing to lock Rear Grille in place. Tighten=Clockwise

#### Step #5



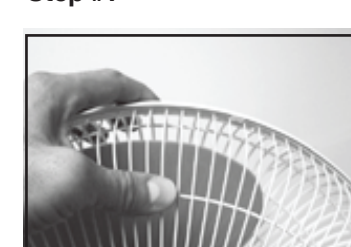
Remove any protective covering over shaft before Fan Blade installation. Place Fan Blade onto Motor Shaft. Notice the pin on Motor Shaft should fit into slots of Fan Blade.

#### Step #6



Thread Blade Cap onto threaded end of Motor Shaft. Note: Threads are reversed at this connection. Tighten=Counter-clockwise.

#### Step #7



With logo upright, attach Front Grille to Rear Grille by snapping them together. Be sure all 6 clips are secure. Do not operate fan without grille in place.

**REPAIR:** DO NOT OPERATE THE FAN WITHOUT THE GRILL IN PLACE. DO NOT USE THE FAN IF IT HAS MALFUNCTIONED OR BECOME DAMAGED IN ANY WAY.

**STORAGE:** Keep original carton for storage of the fan. Coil and tie the power cord to avoid damage during storage.

This appliance is not intended for use by persons (including children) with reduced physical, sensory or mental capabilities, or lack of experience and knowledge, unless they have been given supervision or instruction concerning use of the appliance by a person responsible for their safety.

Page 3

### CARE AND MAINTENANCE

**CLEANING:** CAUTION-Before cleaning the fan be sure to disconnect power cord from the plug. Clean the grill surface with a clean damp cloth. Do not use harsh chemical or abrasive cleaners. DO NOT IMMERSE THE FAN OR ANY WIRES IN WATER. Replace front grill before fan use. Allow fan to dry completely before use. Periodic grill cleaning with a vacuum will prevent dust build up. The motor is sealed and does not require any interior maintenance, cleaning or lubrication.

**MAINTENANCE:** The Internal motor bearings are permanently lubricated at the factory and do not require any additional lubrication.

Page 4